

Amended  
UNOFFICIAL COPY  
PAGE 134-135  
SHEET 1 OF 3  
REGISTER OF DEEDS

# LAKWOODS FOREST RIDGES CONDOMINIUM PLAT OF LOTS 1 THROUGH 5 OF THE PLAT OF OAK RIDGE SUBDIVISION AMENDMENT NO. 1

LOCATED IN THE N1/2 OF THE NW1/4 SECTION 21, T.43N. R.6W.  
TOWN OF NAMAKAGON, BAYFIELD COUNTY, WISCONSIN

00 FEB 28 AM 8 59  
REGISTER'S OFFICE/S.S.  
BAYFIELD COUNTY, WIS.

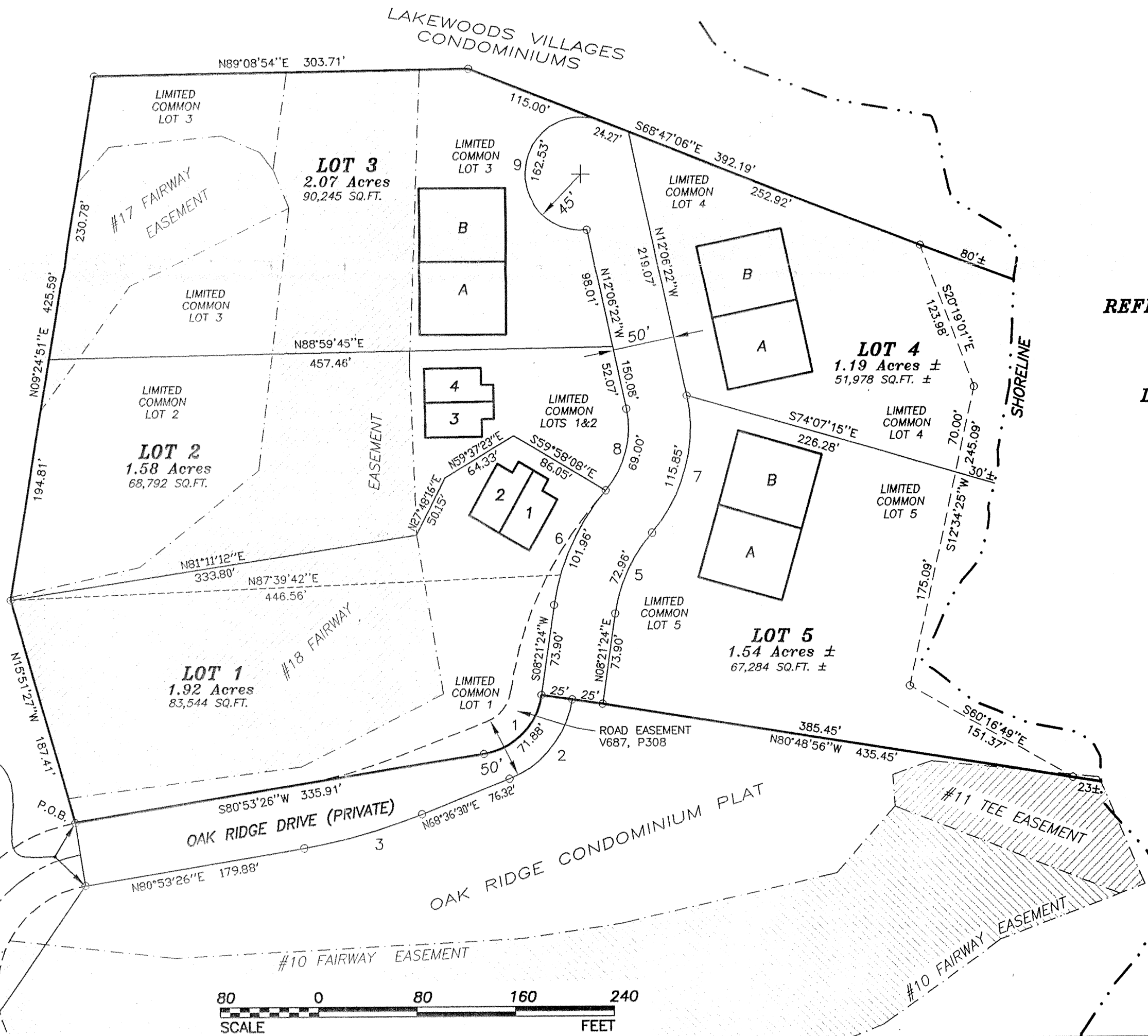
455626

### CURVE TABLE

<b>CURVE No. 1</b> D= 72'32"10" R= 56.78' L= 71.88' LC= 67.17' CB= N44'37'25"E	<b>CURVE No. 6</b> D= 33'13'39" R= 175.82' L= 101.96' LC= 100.54' CB= S24'58'12"W
<b>CURVE No. 2</b> D= 60'15'06" R= 81.78' L= 86.00' LC= 82.09' CB= N38'28'57"E	<b>CURVE No. 7</b> D= 53'41'20" R= 123.64' L= 115.85' LC= 111.66' CB= S14'44'19"W
<b>CURVE No. 3</b> D= 12'16'57" R= 464.70' L= 99.62' LC= 99.43' CB= N74'44'58"E	<b>CURVE No. 8</b> D= 53'41'19" R= 73.64' L= 69.00' LC= 66.50' CB= S14'44'19"W
<b>CURVE No. 5</b> D= 33'13'41" R= 125.82' L= 72.96' LC= 71.95' CB= S24'58'12"W	<b>CURVE No. 9</b> D= 206'56'31" R= 45.00' L= 162.53' LC= 87.52' CB= S7'44'38"W

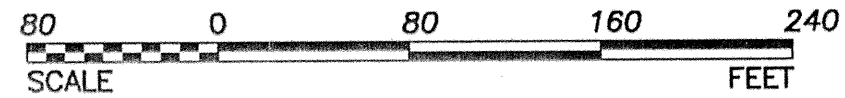
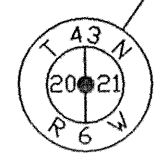
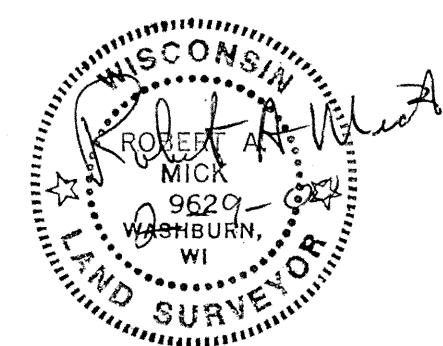
### LEGEND

- IRON PIPE OR ROD FOUND
- 3/4" x 24" IRON REBAR WEIGHING 1.63 LBS./LIN.FOOT SET
- 2" x 30" IRON PIPE WEIGHING 3.65 LBS./LIN.FOOT SET
- SHORELINE



REFLECTIONS

LAKE



SUPERIOR SURVEYS, INC. *pl24.00*  
78215 STATE HWY. 13  
WASHBURN, WISCONSIN  
R.A. MICK R.L.S. 962

J. EP. 15 WM 2M

3184

135

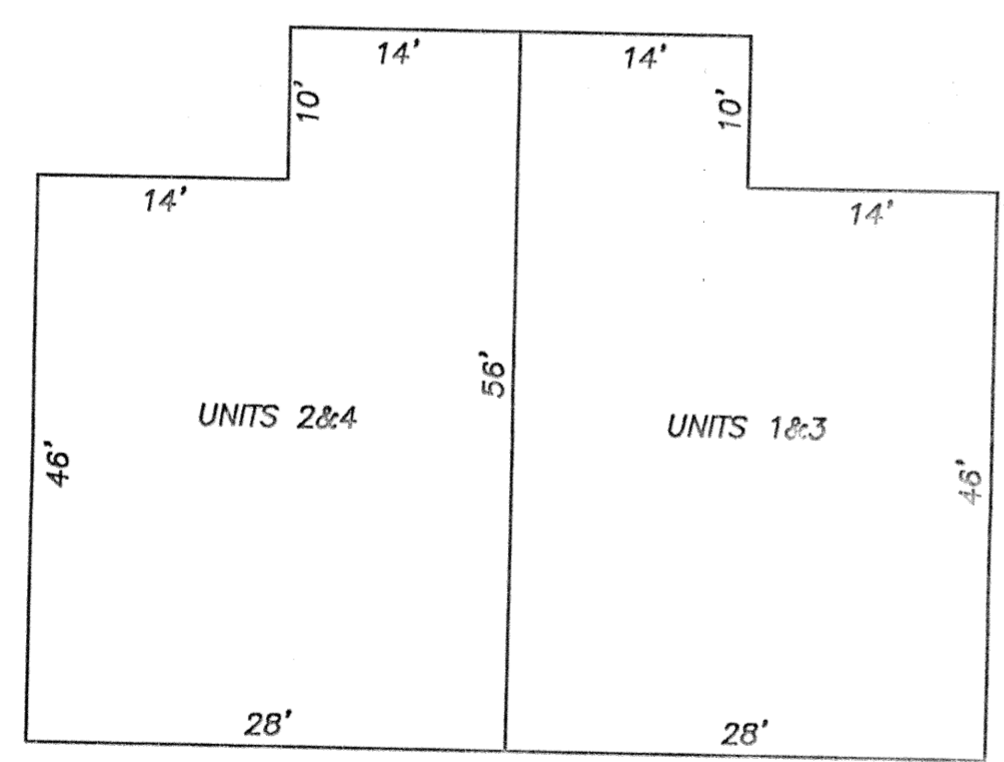
# LAKWOODS FOREST RIDGES CONDOMINIUM PLAT

SHEET 2 OF 3

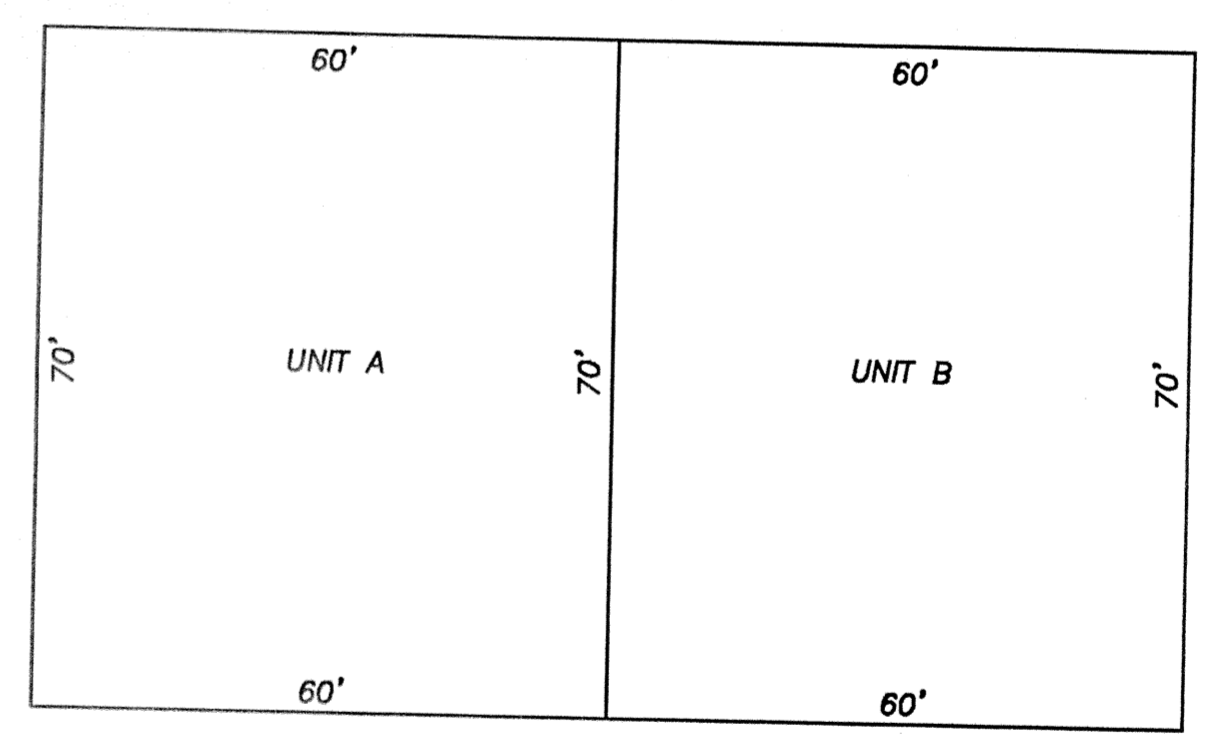
OF LOTS 1 THROUGH 5 OF THE PLAT OF OAK RIDGE SUBDIVISION  
AMENDMENT NO. 1

LOCATED IN THE N $\frac{1}{2}$  OF THE NW  $\frac{1}{4}$ , SECTION 21, T43N, R6W  
TOWN OF NAMAKAGON, BAYFIELD COUNTY, WISCONSIN

UNITS 1-4, LOTS 1 & 2



UNITS A & B, LOTS 3, 4 & 5



UNOFFICIAL COPY

UNOFFICIAL COPY



SUPERIOR SURVEYS, INC.  
78215 STATE HWY. 13  
WASHBURN, WISCONSIN  
R.A. MICK R.L.S. 962